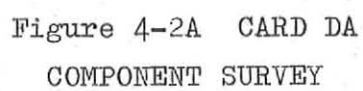


AO	AREA AROUND EVEN TRACK	EP	END OF POSITIONING
A12	AREA BETWEEN ODD AND EVEN TRACK	EFM	ENERGISE PAK MOTOR
ABO THR 7	ADDRESS AND CONTROL BUS BIT 0 THR 7	EPZO	RESET EP
ANER	ANALOGUE ERROR	EPZ1	SET EP
AT	ATTENTION	EPZD	END OF POSITIONING
		ER	ERASE ENABLE
BIR	BRUSH IN RETRACTED	ERC	ERASE CURRENT
BIRA	CLEANING BRUSH IN RETRACTED ACTIVE	ERE	ERASE ENABLE COMMAND
BIRN	CLEANING BRUSH IN RETRACTED NOT ACTIVE	ETP	EVEN TRACK PULSE
BPDA	BLOCKADE POSITIONER DRIFTS AWAY	EWEC	ERASE AND/OR WRITE COMMAND
BWC	BLOCKADE WRITE CURRENT	EXC	EXCHANGE CARTRIDGE
CA	CLEANING CYCLE ALLOWED	FNG	FIRST SEEK NORMAL END
CAO THR 7	CYLINDER ADDRESS REGISTER BIT 0 THR 7	FNEZO	RESET FNE
CAE	CYLINDER ADDRESS REGISTER EXTENDED	FNEZ1	SET FNE
CAS	CYLINDER ADDRESS SELECT	FSF	FIRST SEEK
CDF3	CARRY DIFFERENCE BIT 3		
CDF7	CARRY DIFFERENCE BIT 7	HO	HEAD REGISTER BIT 0
CDFE	CARRY DIFFERENCE EXTENDED	H1	HEAD REGISTER BIT 1
CDS	CHECK DISK SPEED	HS	HEAD SELECT
CIP	CARRIDGE IN PACK		
CL	CLAMP LOCK ENERGIZED	IC1	INDEX CARTRIDGE 1
CME	CLEANING MOTOR ENERGIZED	IC2	INDEX CARTRIDGE 2
CMEZO	RESET CME	IF1	INDEX FIXED DISK 1
CMEZ1	SET CME	IF2	INDEX FIXED DISK 2
CON	ON CYLINDER	INS	INITIATE NORMAL SEEK
COSX	COSINE X MEANDER SIGNAL	IO	INTEGRATOR OUT
CP	CURRENT POSITIONER	IPC	INDEX PULSE CARTRIDGE
CS	CYLINDER SELECT COMMAND	IPCP	INDEX PULSE CARTRIDGE PREPARATION
CTS	CONTROL SELECT COMMAND	IPF	INDEX PULSE FIXED DISK
		IPFP	INDEX PULSE FIXED DISK PREPARATION
DCO THR 7	DECREMENT COUNTER BIT 0 THR 7	IRDC	INTERNAL READ CLOCK
DCOD	DECREMENT COUNTER BIT 0 DECREMENTED	IS	INITIATE A SEEK
DC7D	DECREMENT COUNTER BIT 7 DECREMENTED	ISPC	INDEX SECTOR PULSE CARTRIDGE
DCE	DECREMENT COUNTER EXTENDED BIT	ISPF	INDEX SECTOR PULSE FIXED DISK
DCEE	DECREMENT COUNTER EXTENDED BIT TO ELECTRONIC PART	IW	INITIAL WAIT
		IWZ1	SET IW
DCP	DECREMENT COUNTER PREPARATION		
DE	DECELERATE	LHC	LOWER HEAD CARTRIDGE
DEB	DE-ENERGIZE EMERGENCY BRAKE	LHF	LOWER HEAD FIXED DISK
DEO	DECREMENT COUNTER EQUAL ONE		
DETON	DETECT TRACK ONE NEGATIVE	MAD	MAXIMUM AT DA-CONVERTER
DEZ	DECREMENT COUNTER EQUAL ZERO	MC	MASTER CLEAR
DEZO	RESET DECREMENT COUNTER	MNC	MECHANICAL ON CYLINDER
DFO THR 7	DIFFERENCE BIT 0 THR 7	MOD	MECHANICAL ON CYLINDER DETECT
DFF	DIRECTION IS FORCED FORWARD	NCD	NEGATIVE COSINE X MEANDER SIGNAL DE-MODULATED
DFFZD	DIRECTION IS FORCED FORWARD		
DFFZO	RESET DFF	NS	NORMAL SEEK
DFFZ1	SET DFF	NSP	NORMAL SEEK COMMAND PREPARATION
DID	DATA IN DANGER	NSTD	NEGATIVE SPEED TRANSDUCER
DIPC	DETECT INDEX PULSE CARTRIDGE R		
DIPF	DETECT INDEX PULSE FIXED DISK	OPZ	OPTICAL ZERO
DMR	DIFFERENCE BETWEEN MOMENTARY AND REQUIRED SPEED	OTP	ODD TRACK PULSE
DNC	DRIVE NEGATIVE CURRENT	PAT	PREPARATION
DOF	DECREMENT ONE STEP FORCED	PATT	PREPARATION ATTENTION TRIGGER
DPC	DRIVE POSITIVE CURRENT	PATZO	RESET PAT
DPM	DE-ENERGIZE PAK MOTOR	PATZ1	SET PAT
DRS	DRIVER SIGNAL	PCD	POSITIVE COS X MEANDER DEMODULATED
		PDA	POSITION DRIFTS AWAY OR NO MEANDER SIGNAL
EC	ENABLE COUNT		
EDC	ENABLE DATA TO DECREMENT COUNTER	PEEN	PREPARATION EVEN END POSITION NEXT
EEE	EVEN END POSITION TO ELECTRONIC PART	PExc	PREPARATION EXCHANGE OF CARTRIDGE
		PLSL	PLURAL SELECTION
EIP	ENABLE INDEX PULSE	PMD	PAK MOTOR DE-ENERGIZED
ELER	ELECTRONIC ERROR (READ/WRITE)	PME	PAK MOTOR ENERGISE
EMB	EMERGENCY BRAKE	PMZ1	SET PME

POC	POWER ON OFF CLEAR	TSRM	TEST RESISTOR DIODE MATRIX
POCT	POWER ON OFF CLEAR TEST	TWSIW	TEST WINDOW SPEED IN WINDOW
PONG	PREPARATION ON CYLINDER		
PONO	POSITIONER OVER TRACK ONE NEGATIVE	UHC	UPPER HEAD CARTRIDGE
PS	POSITIONING SERVO	UHF	UPPER HEAD FIXED DISK
PSD	POSITIVE SINE X MEANDER SIGNAL DEMODU- LATED	UNS	UNSAFE
PSTD	POSITIVE SPEED TRANSDUCER	UNSZ1	SET UNS
		UR	UNIT READY
		URI	UNIT READY INDICATOR
RC	READ CONTROL	USA1	UNSAFE 1
RD1,2	READ DATA FROM PRE-AMPLIFIER	USA2	UNSAFE 2
RDDA	READ DATA	USA3	UNSAFE 3
RDE	READ DATA ENABLE	USAF	UNSAFE FLIP-FLOP
RE	READ ENABLE COMMAND	USAZ1	SET USA
REDET	RESET DETECT TRACK ONE NEGATIVE FLIP- FLOP	USL	UNIT SELECT
		UZO	RESET UNSAFE
REPS	RESET END OF POSITION SIGNAL	VPC	VOLTAGE PROPORTIONAL TO CURRENT THROUGH POSITIONER COIL
RER	RECOVERABLE ERROR		
RERZO	RESET RER	WDRW	WRITE DATA RETURN WIRE
RERZ1	SET RER	WOC	WAIT FOR ON CYLINDER MULTIVIBRATOR
RETN	RETRACTED SWITCH NOT ACTIVE	WPI	WRITE PROTECT INDICATOR
REW	READ AND ERASE OR WRITE ENABLE	WR	WRITE ENABLE
RP	RETRACTED POSITION	WRDA	WRITE DATA
RTO	READY TO OPERATE	WRC1	WRITE CURRENT 1
RUS	RESET UNSAFE	WRC2	WRITE CURRENT 2
RWC	REDUCE WRITE CURRENT	WRE	WRITE ENABLE COMMAND
RZ	RETURN TO ZERO	WSIW	TO WINDOW SPEED IN WINDOW
RZC	RETURN TO ZERO COMMAND	WTC	WITHIN TRACK CENTRE
RZS	RETURN TO ZERO SEEK		
S	START FLIP-FLOP		
SAL	START ALLOWED		
SAR	STOPPED AND IN RETRACTED		
SBD	START/STOP BUTTON DOWN		
SBP	START/STOP BUTTON PRESSED		
SBU	START/STOP BUTTON UP		
SCX	SINE X AND COSINE X		
SD	PACK SPEED DROPS DURING NORMAL SEEK		
SDEB	SPEED DROPS OR EMERGENCY BROKE		
SEMB	SET EMB		
SINX	SINE X		
SIW	SPEED IN WINDOW		
SLOW	SLOW		
SM	SLOW MOTION FLIP-FLOP		
SMZ1	SET SLOW MOTION FLIP-FLOP		
SMZD	SLOW MOTION		
SMZH	SLOW MOTION		
SPC	SECTOR PULSE CARTRIDGE		
SPCP	SECTOR PULSE CARTRIDGE PREPARATION		
SPF	SECTOR PULSE FIXED DISK		
SPFP	SECTOR PULSE FIXED DISK PREPARATION		
SR	SLOW REVERSE		
START	START		
STL	SEEK CONTINUES TOO LONG		
SUS	SET UNSAFE		
SZO	RESET START FLIP-FLOP		
TC	TRACK COUNT FLIP-FLOP		
TC01-12	TIME COUNTER BIT 01 TILL BIT 12		
TC1011	TIME COUNTER BIT 10 and 11		
TCZ	TRACK CENTRE ZERO		
TCZO	RESET TIME COUNTER		
TDFFB	TEST POINT SIGNAL DFF		
TDMR	TEST POINT SIGNAL DMR		
TDRS	TEST DRIVER SIGNAL DRS		
TPS	TEST POSITIONING SERVO		
TFWEV	TEST WRITE ERASE VOLTAGE		
TRZ	TRACK ZERO		



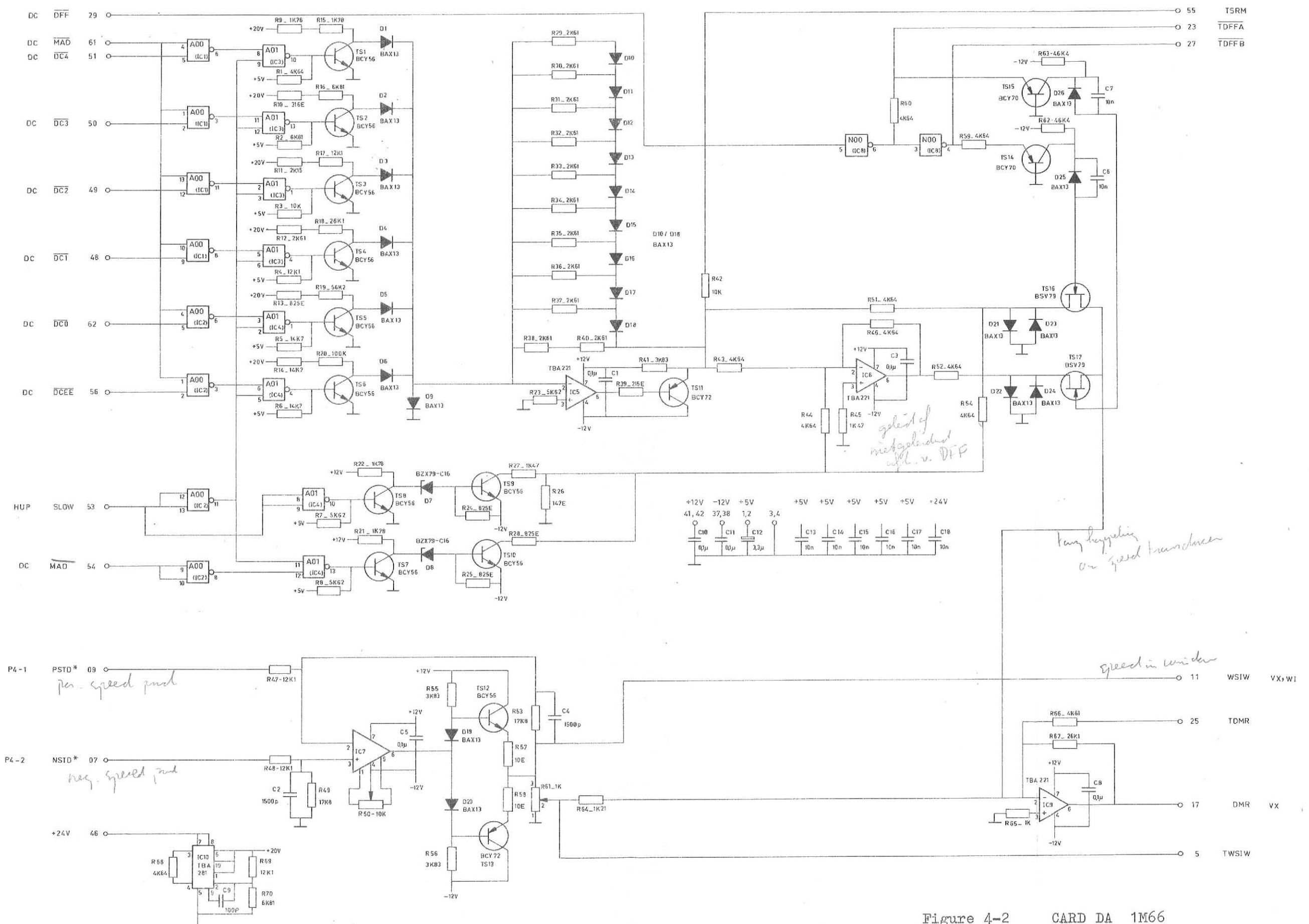


Figure 4-2 CARD DA 1M66

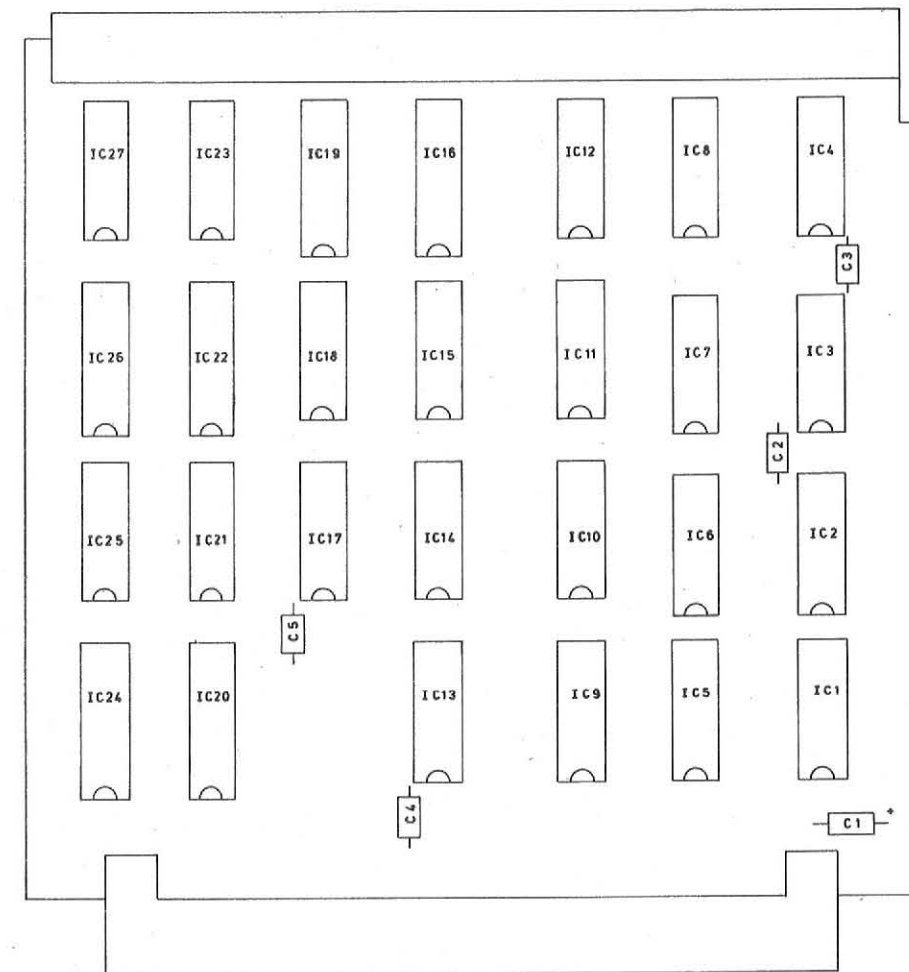


Figure 4-3A CARD DC
COMPONENT SURVEY

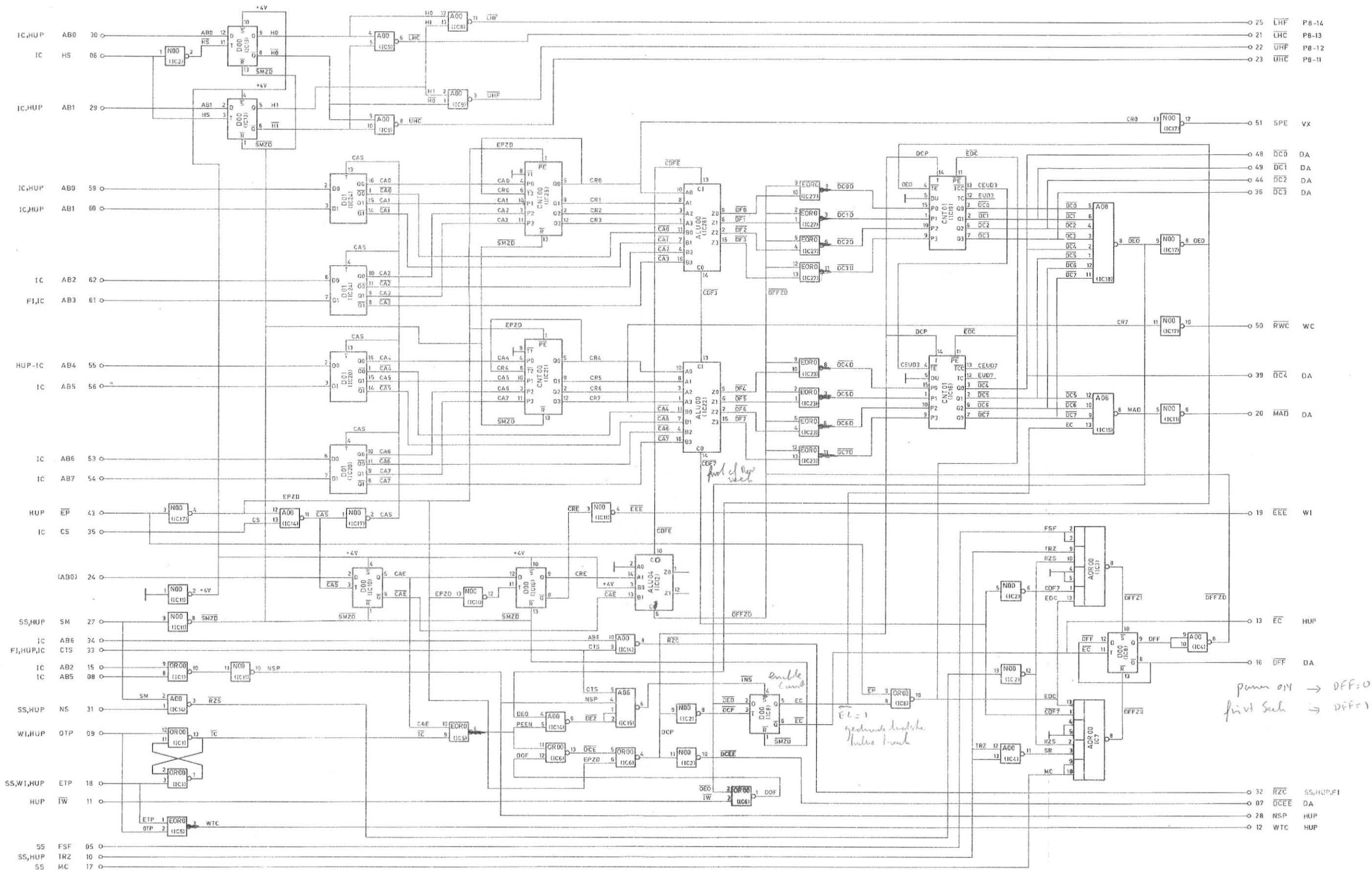


Figure 4-3 CARD DC 1199

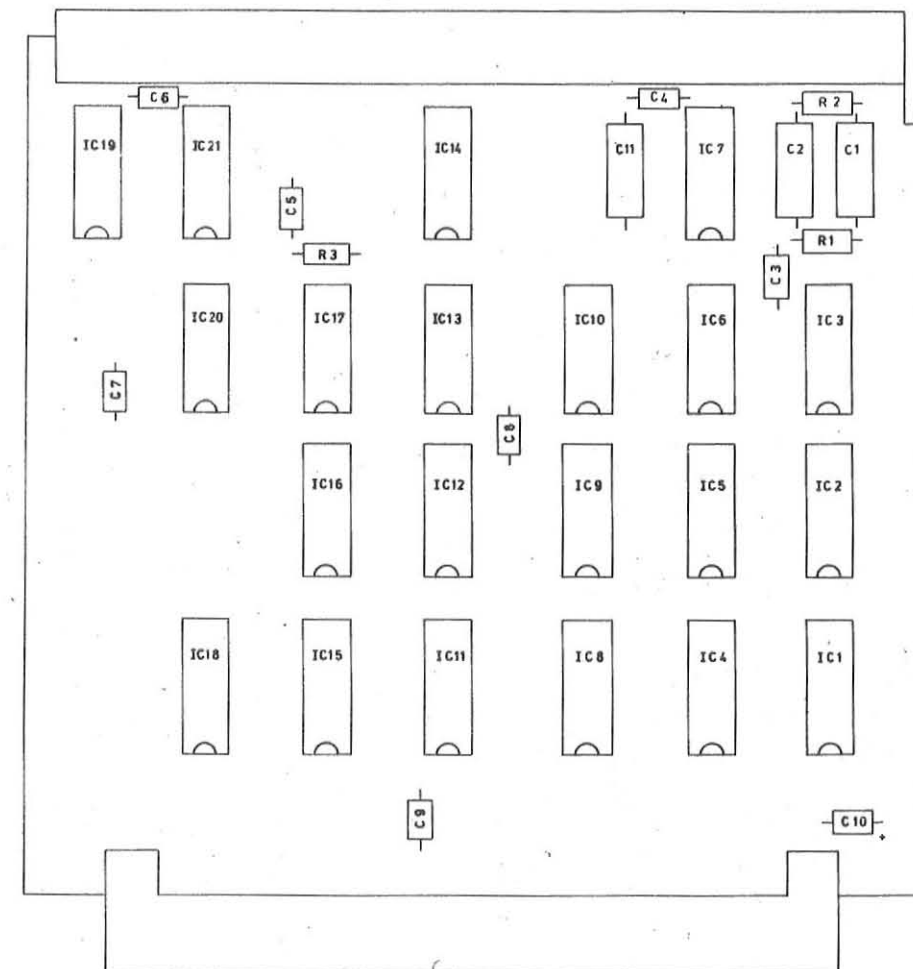


Figure 4-4A CARD HUP
COMPONENT SURVEY



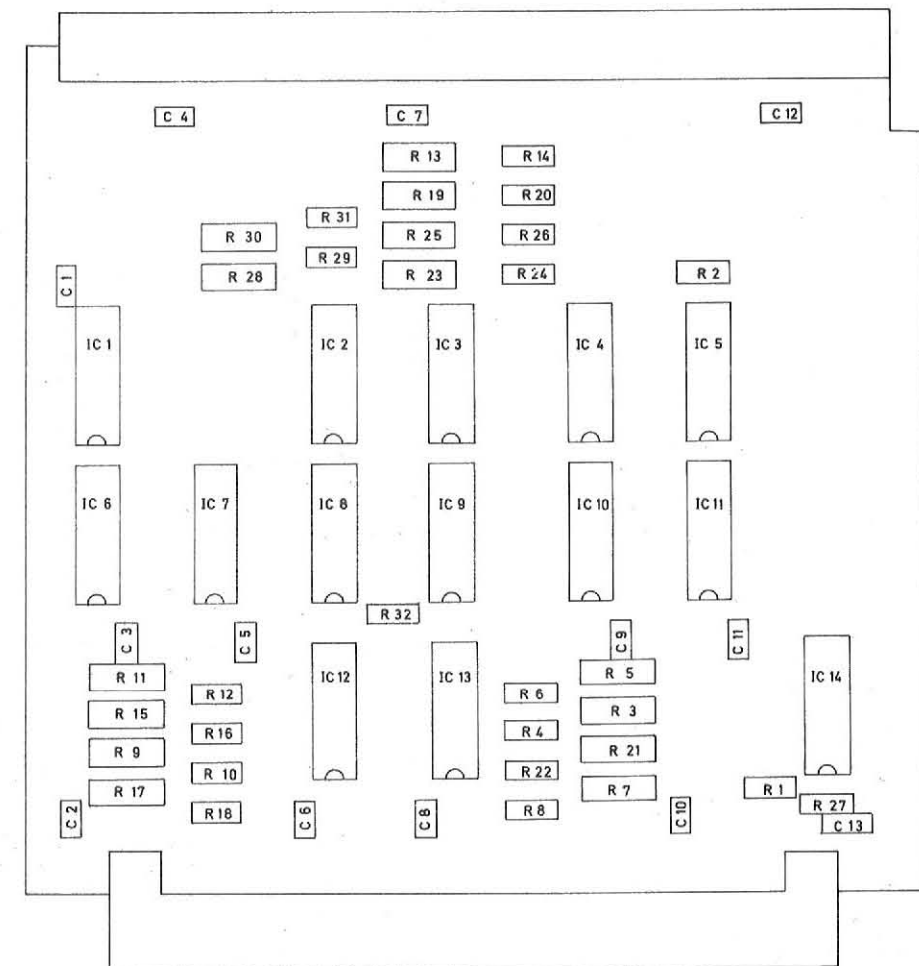


Figure 4-5A CARD INT
CARD SURVEY

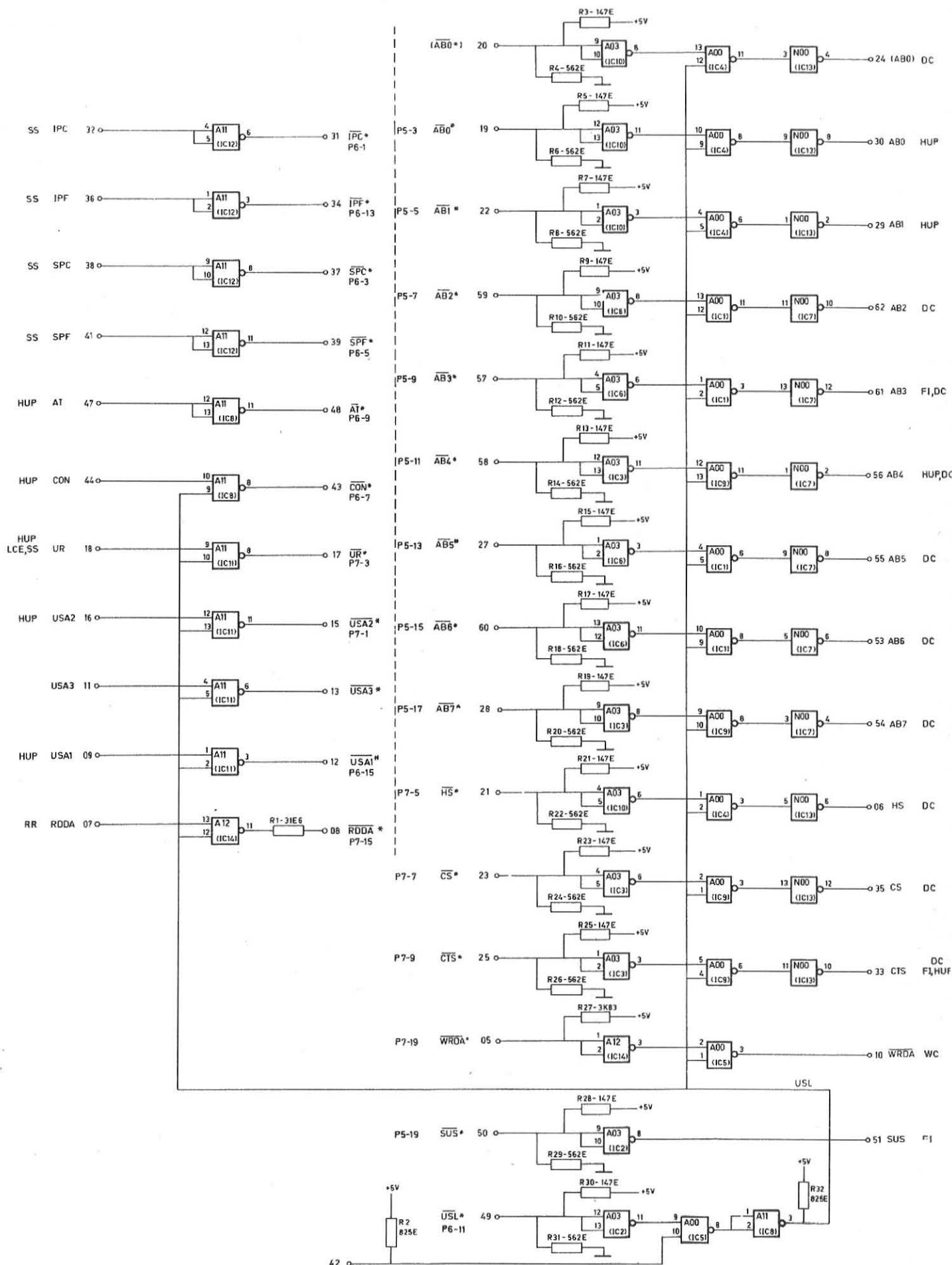


Figure 4-5 CARD INT 2L00

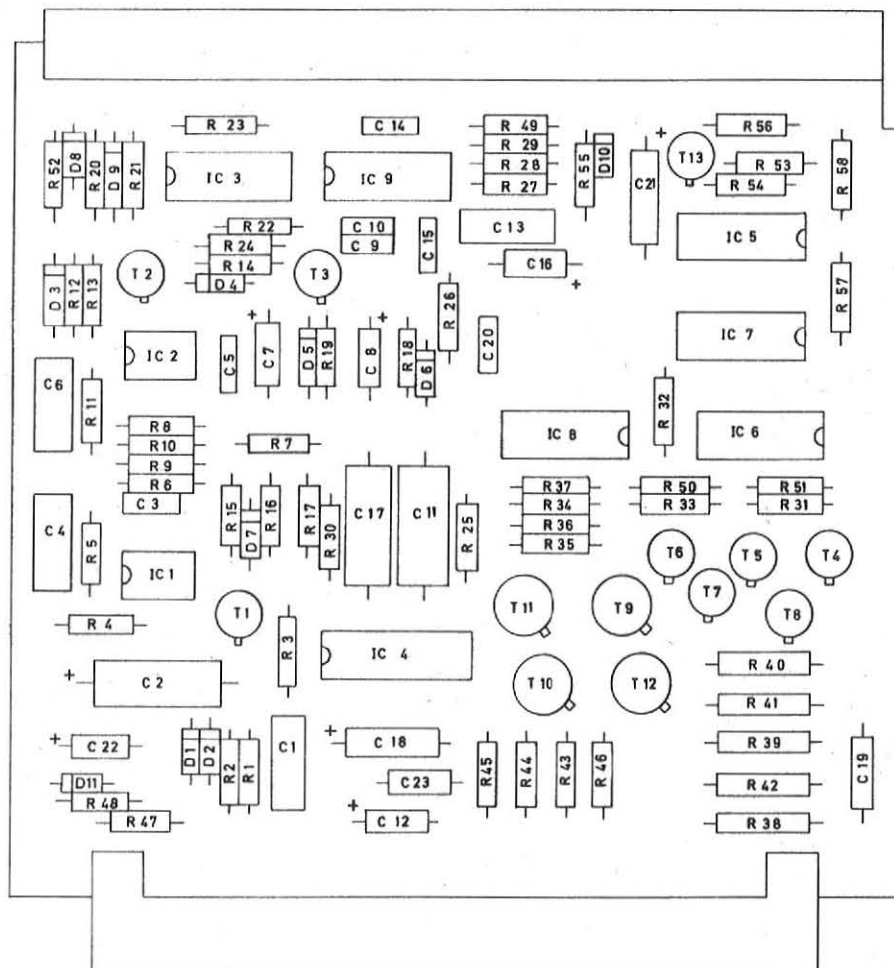
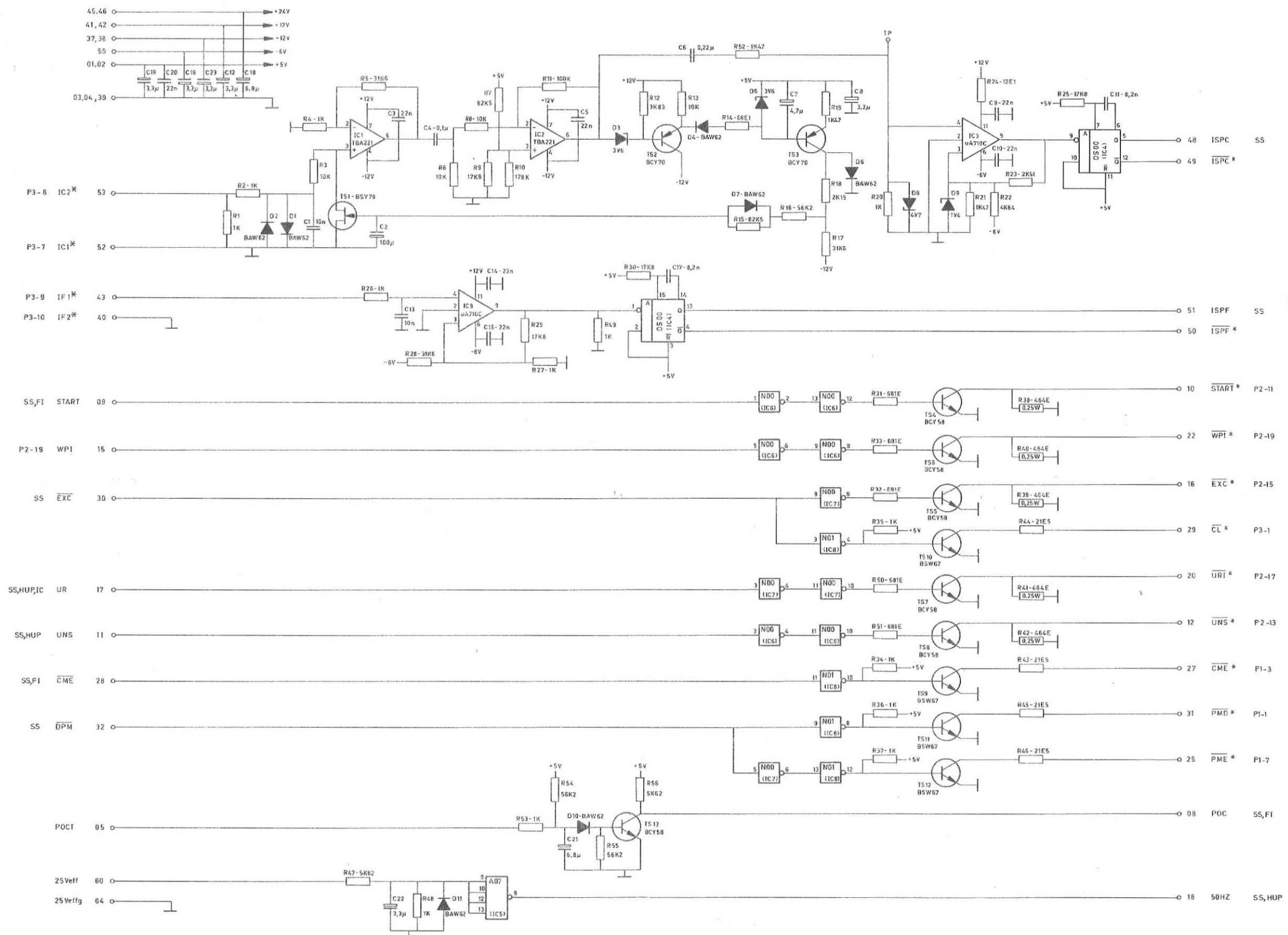


Figure 4-6A CARD LCE
COMPONENT SURVEY



*under section pulser
 antbridge*

*under section pulser
 fixed disk*

Figure 4-6 CARD LCE 1M64

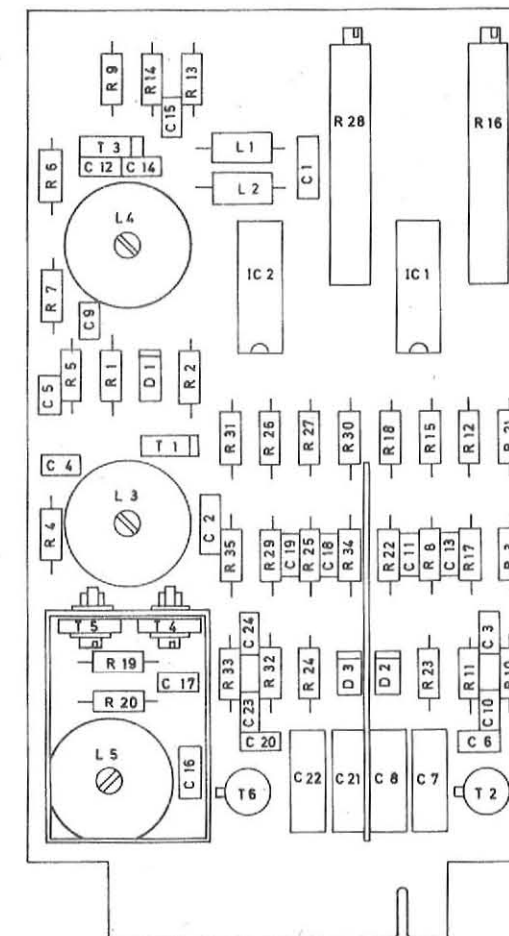
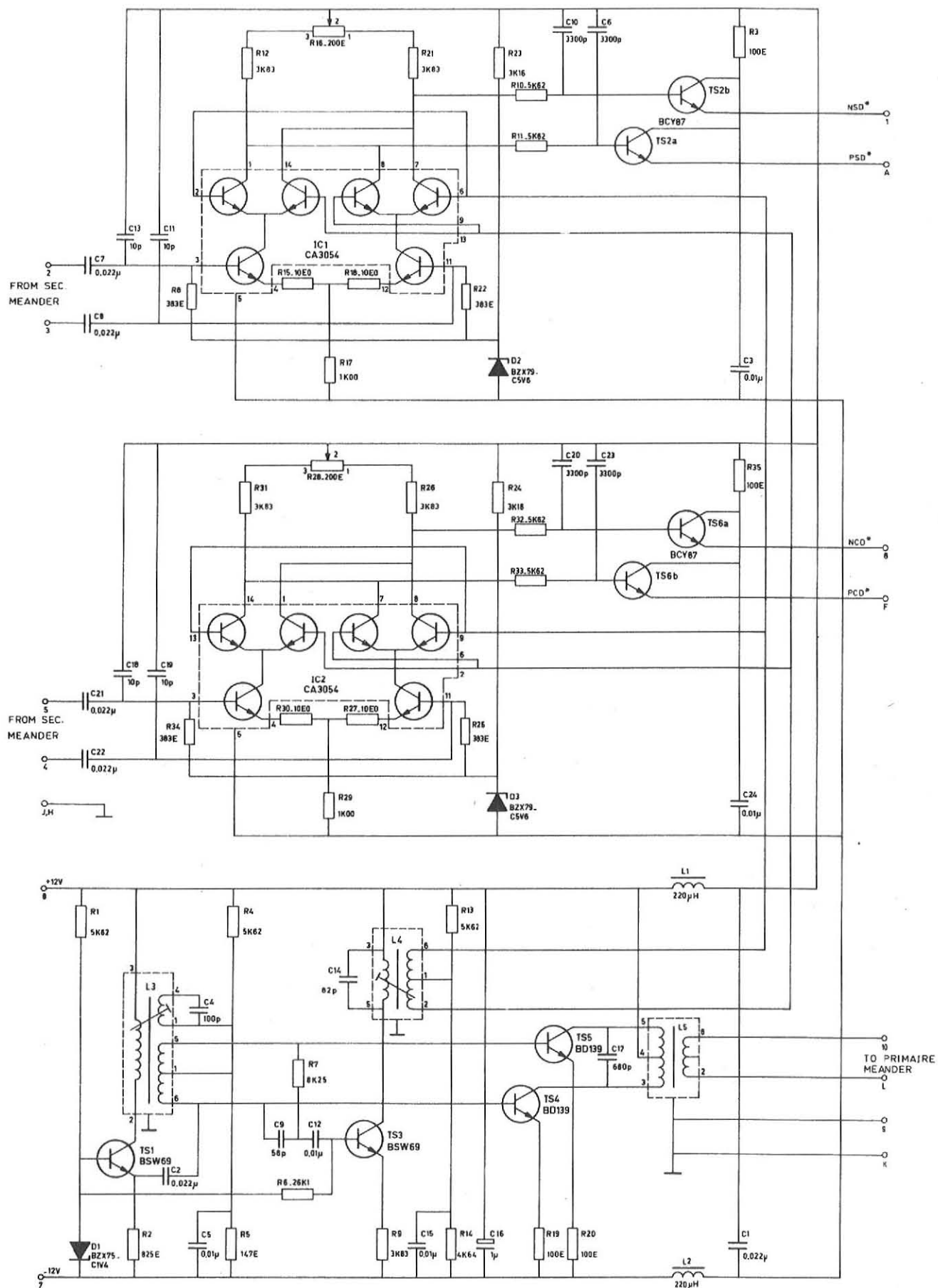


Figure 4-7A CARD MEANDER
COMPONENT SURVEY



306 h c ac Figure 4-7 CARD MEANDER

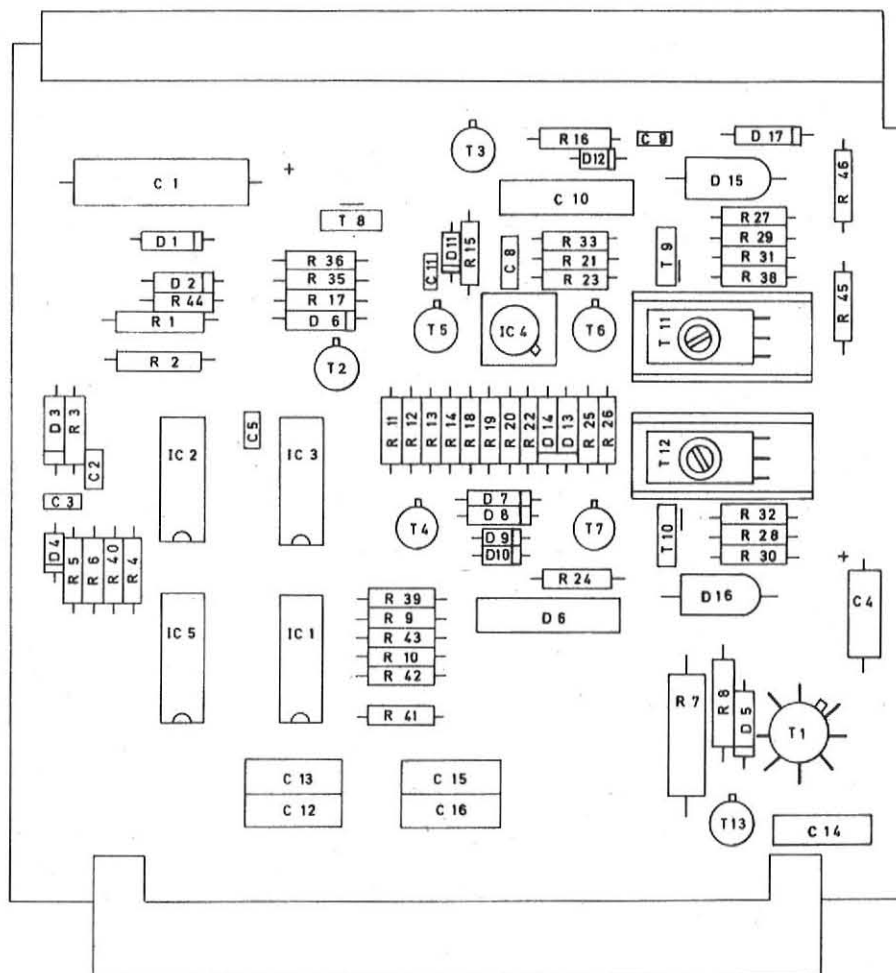


Figure 4-8A CARD PA
COMPONENT SURVEY

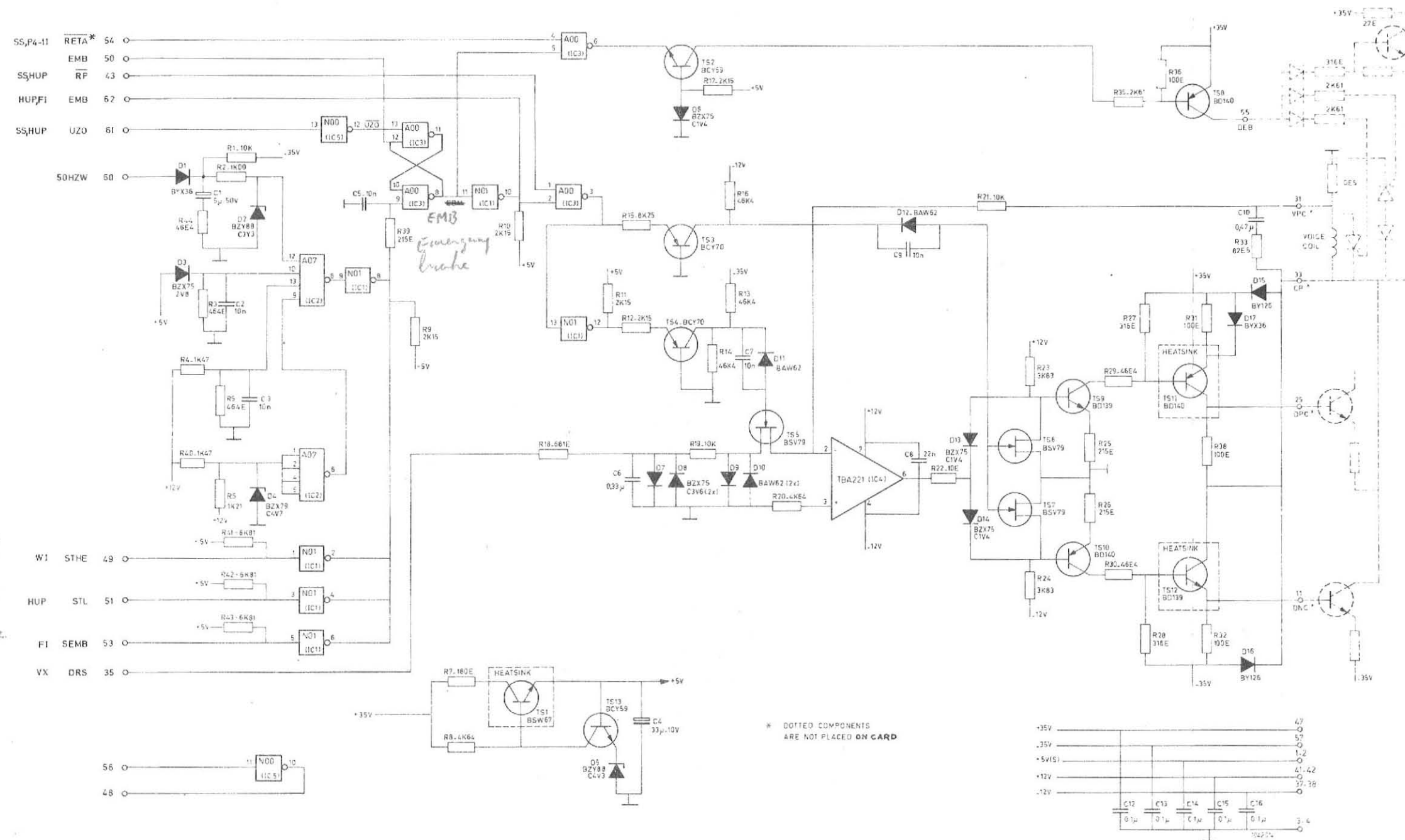


Figure 4-8 CARD PA 1A22

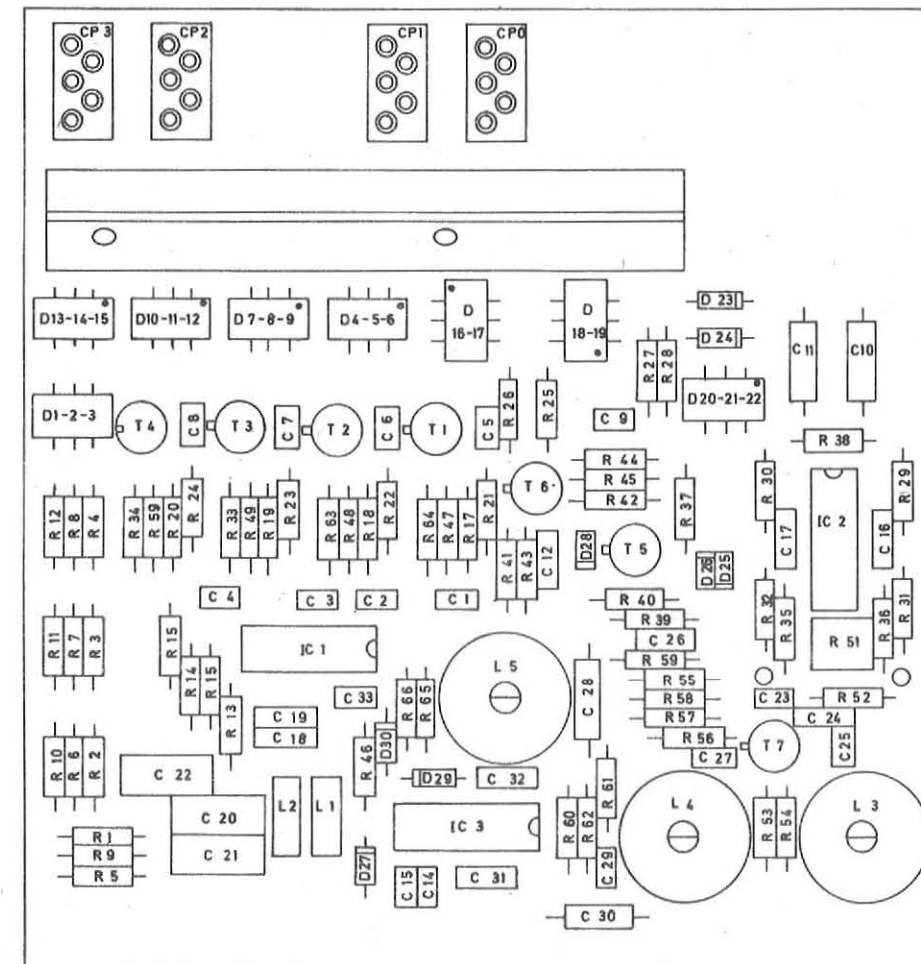


Figure 4-9A CARD RPA
COMPONENT SURVEY

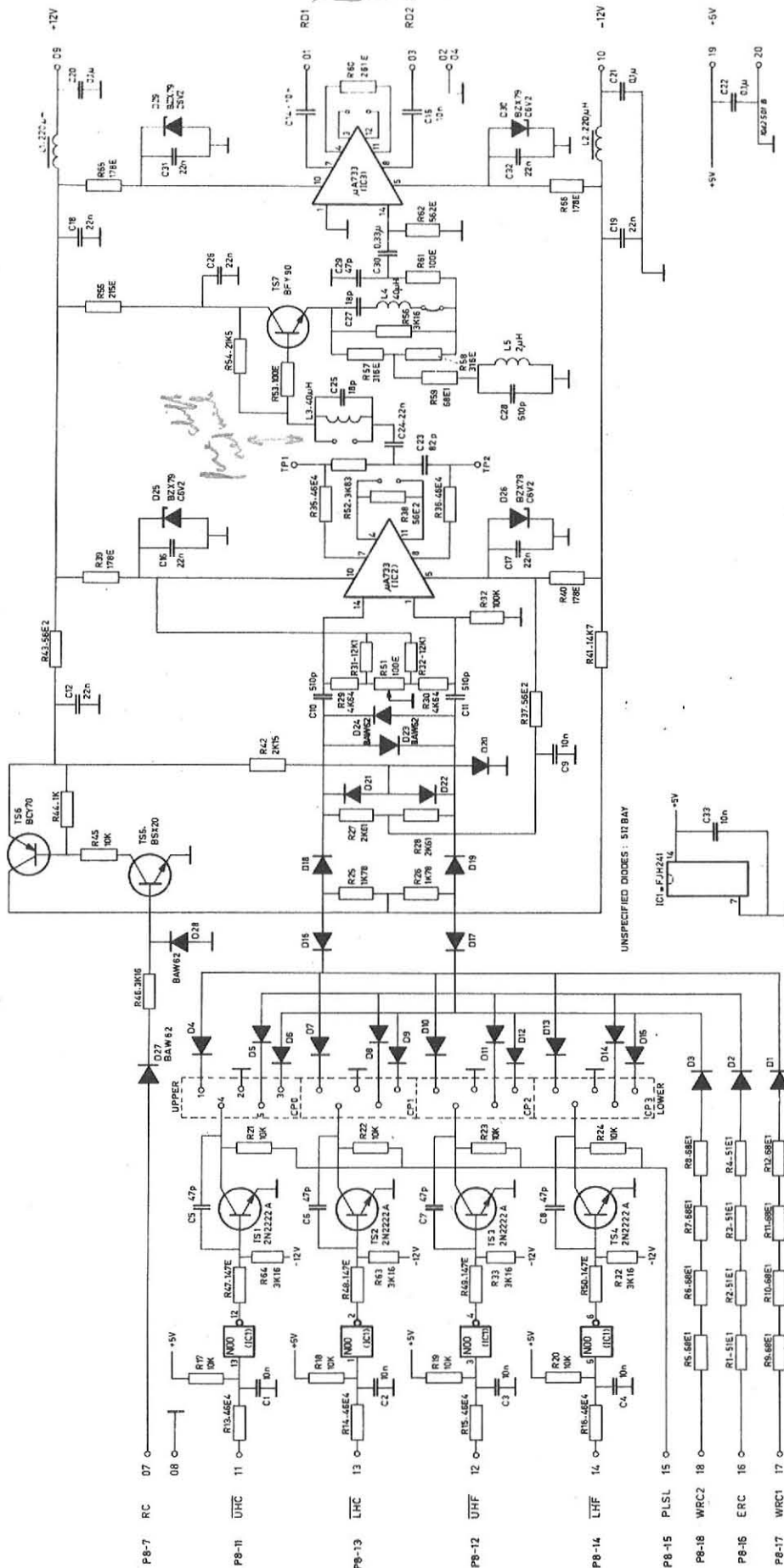


Figure 4-9 CARD RPA

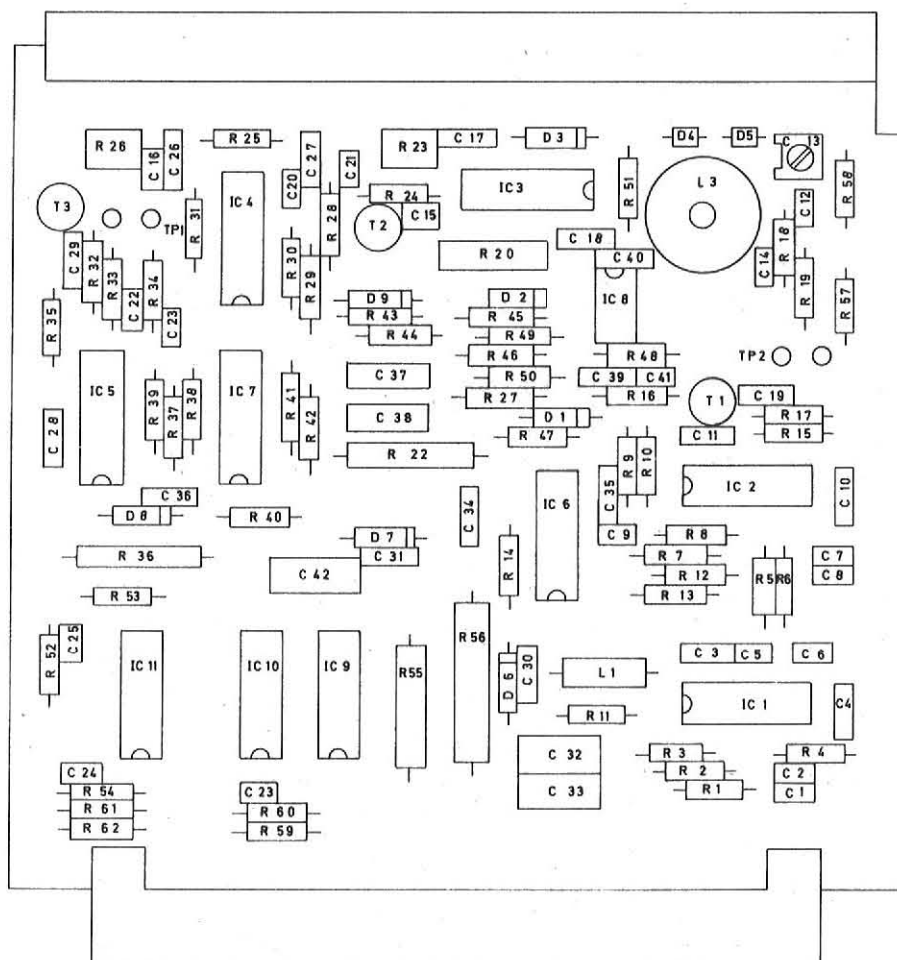


Figure 4-10A CARD R.R.
COMPONENT SURVEY

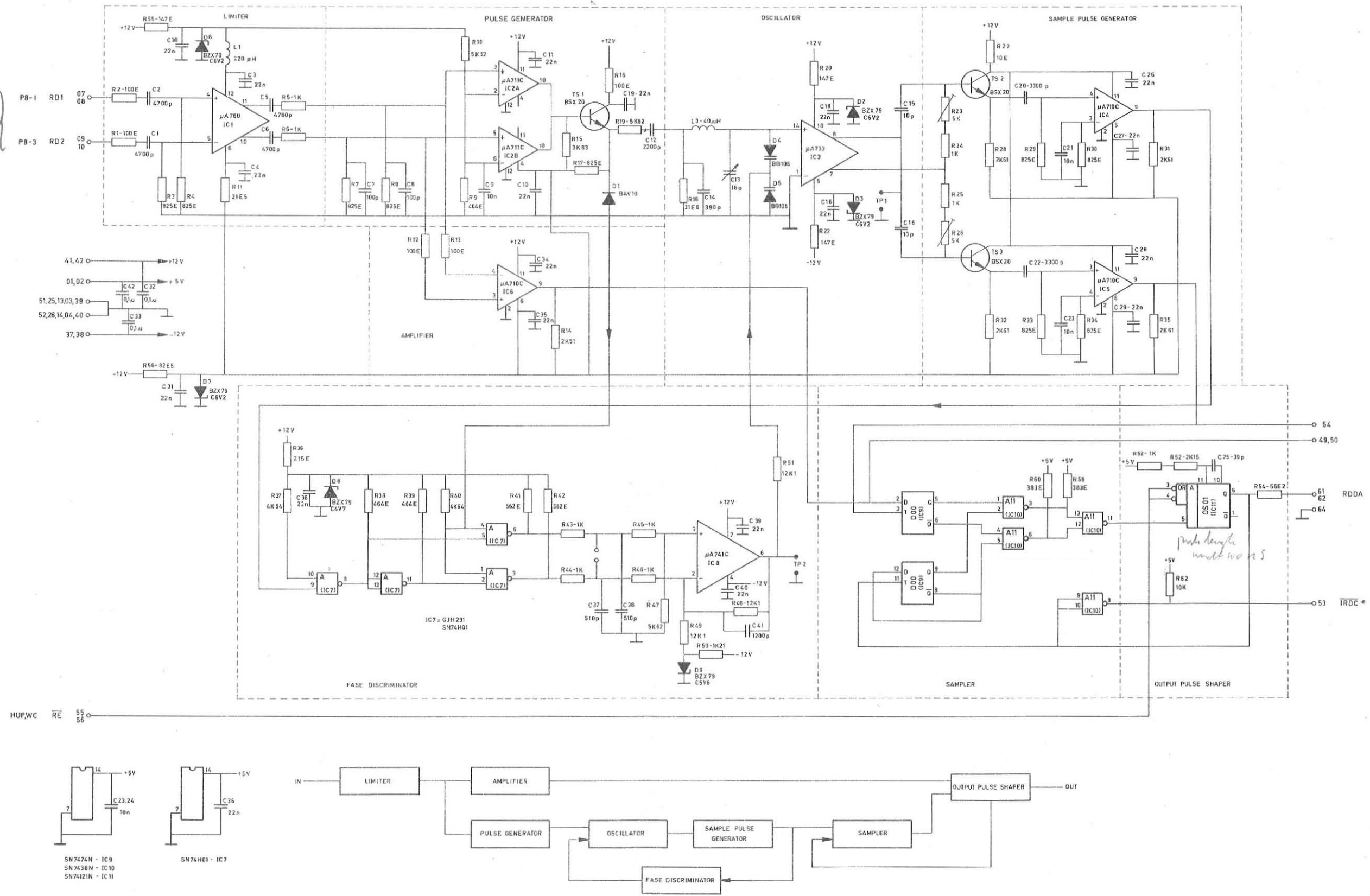


Figure 4-10 CARD RR 1M63

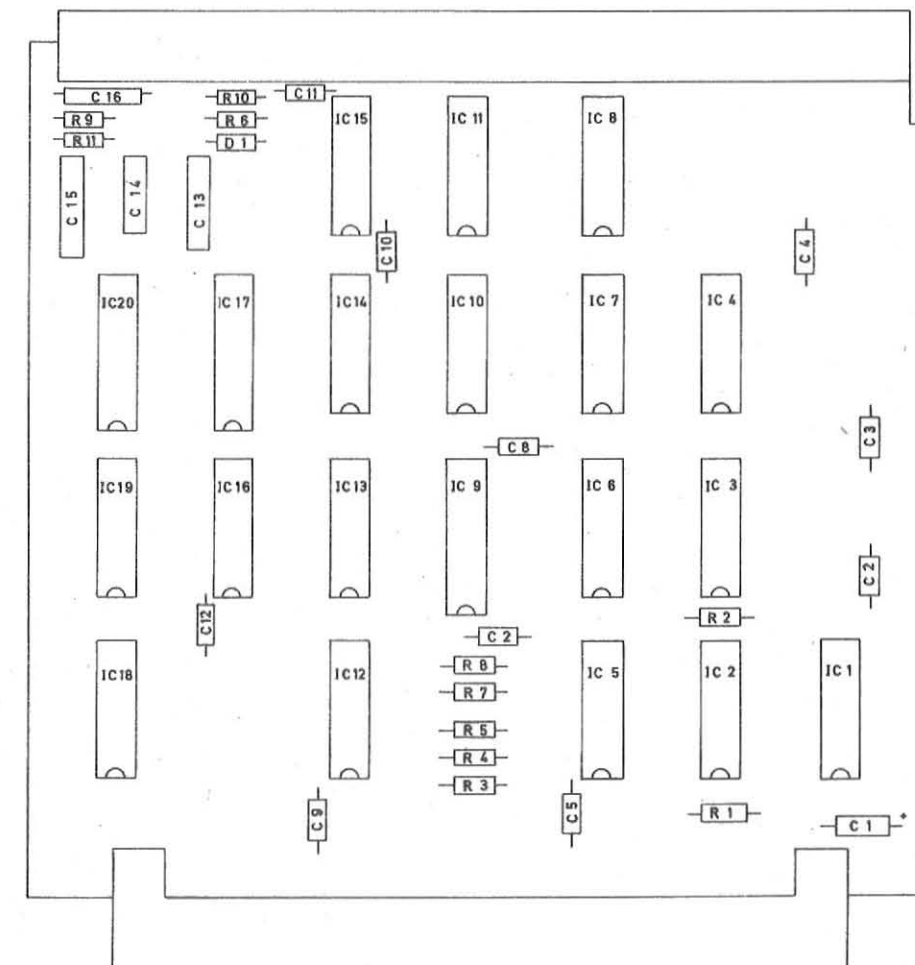


Figure 4-11A CARD SS
COMPONENT SURVEY

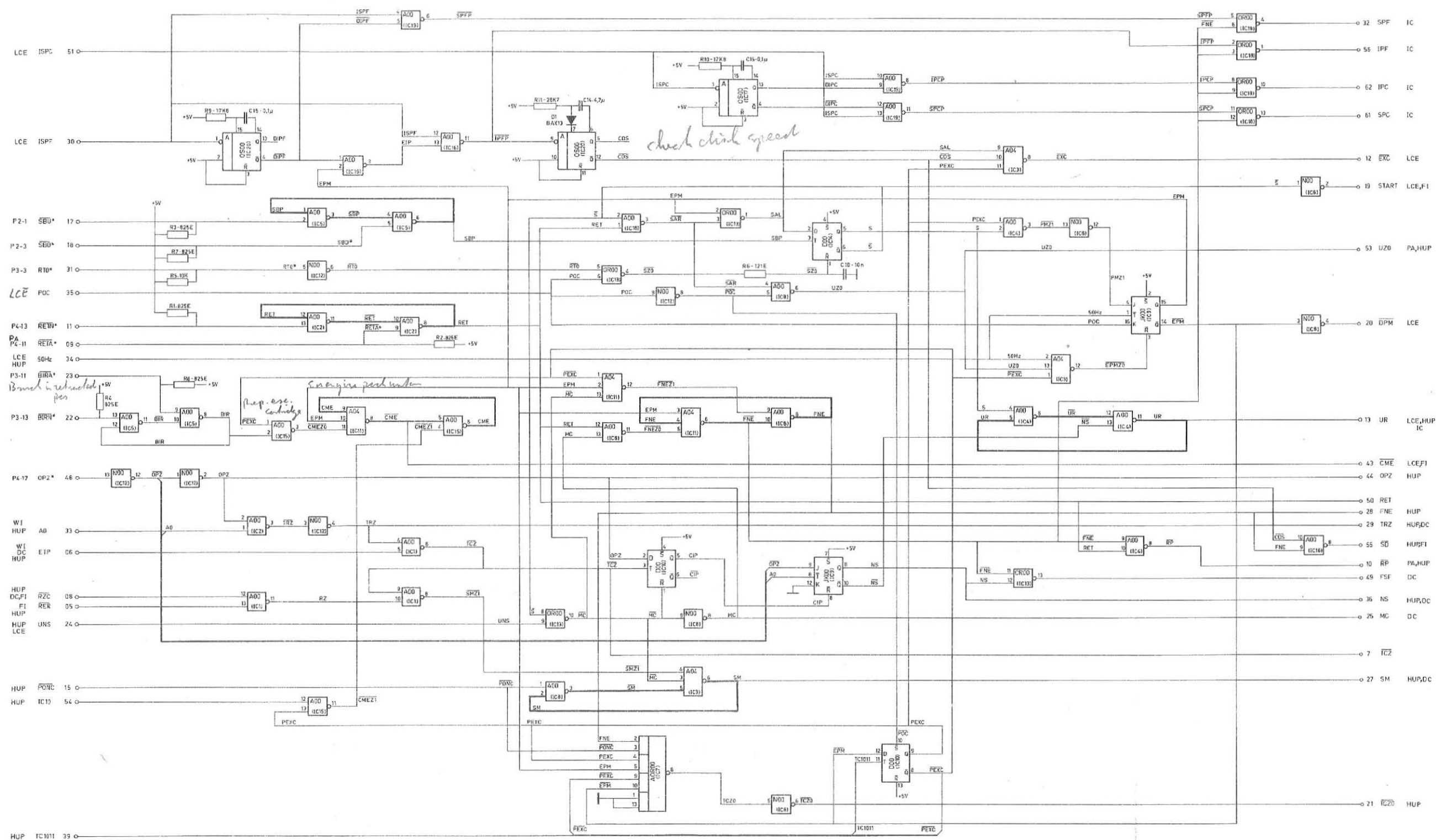


Figure 4-11 CARD SS 1L98

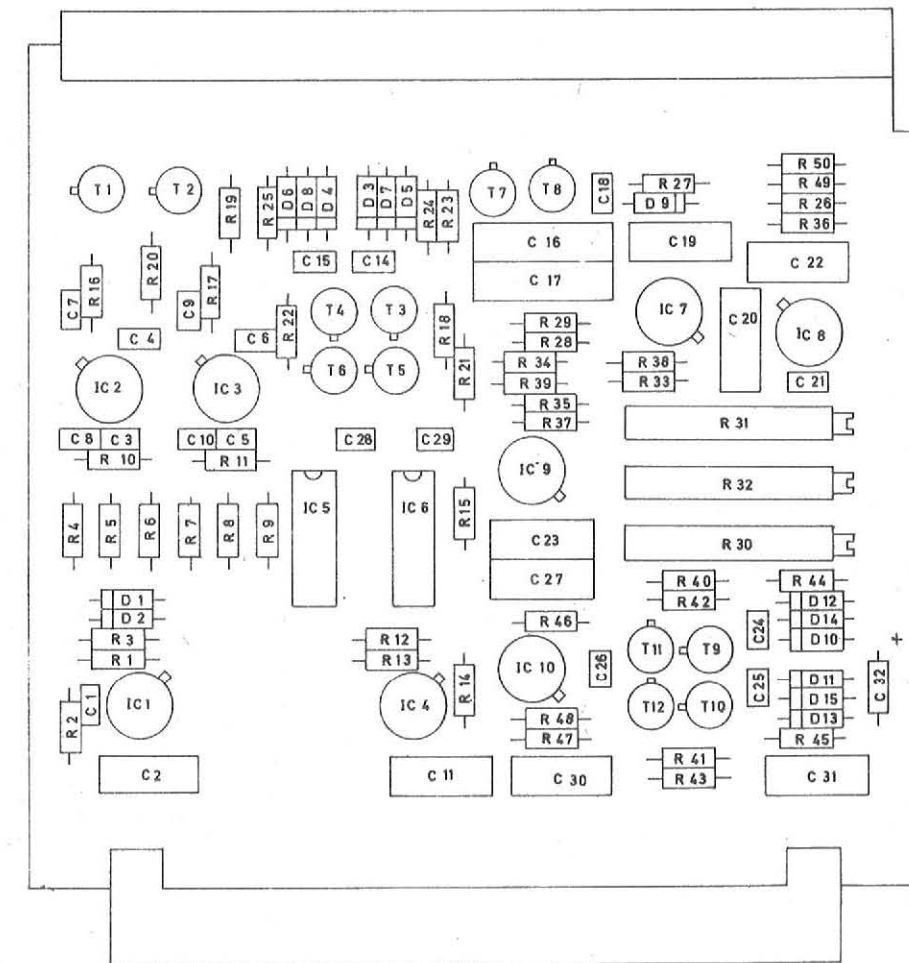


Figure 4-12A CARD VX
COMPONENT SURVEY

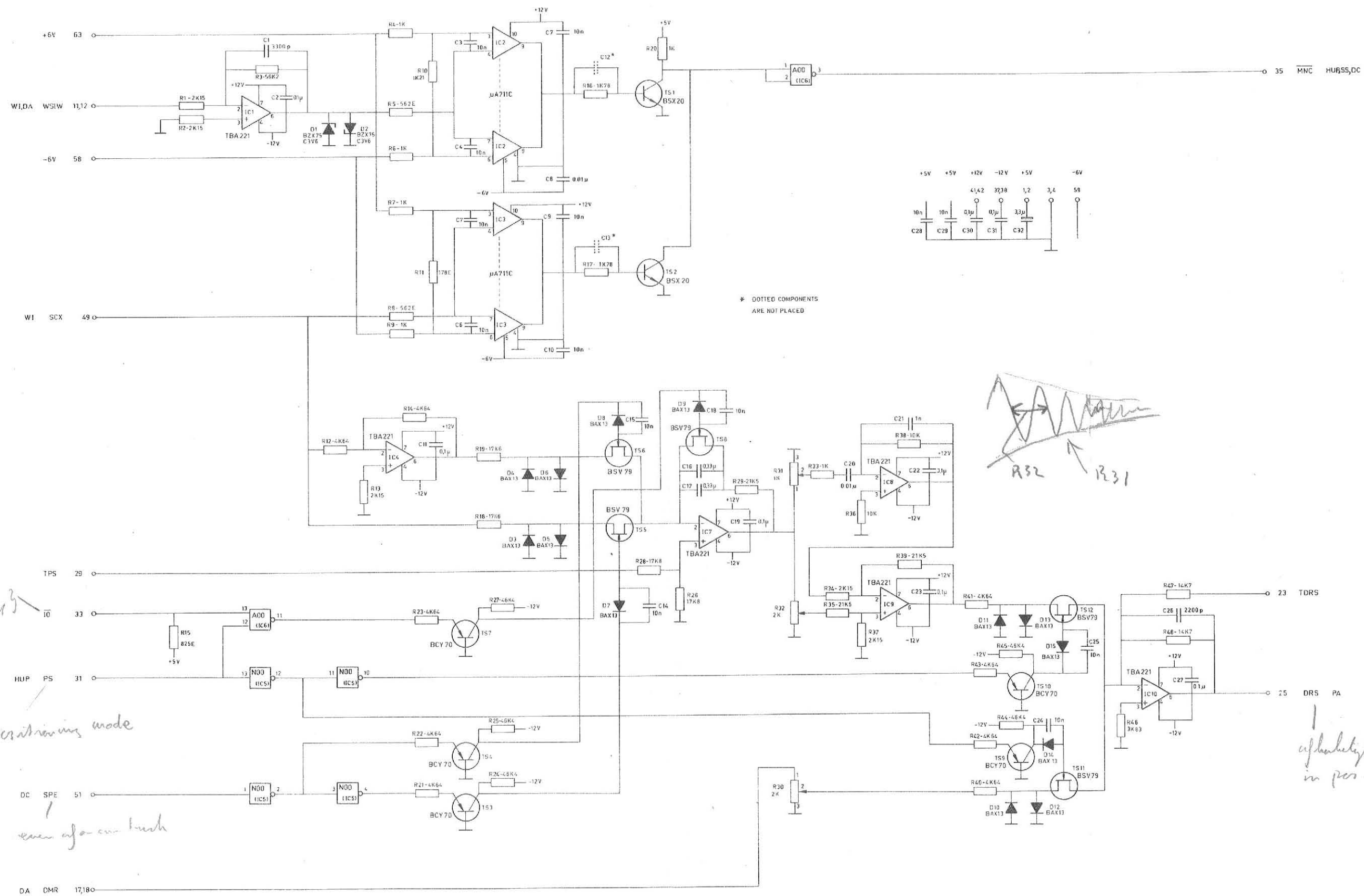
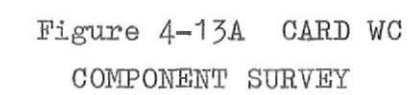


Figure 4-12 CARD VX 1M65





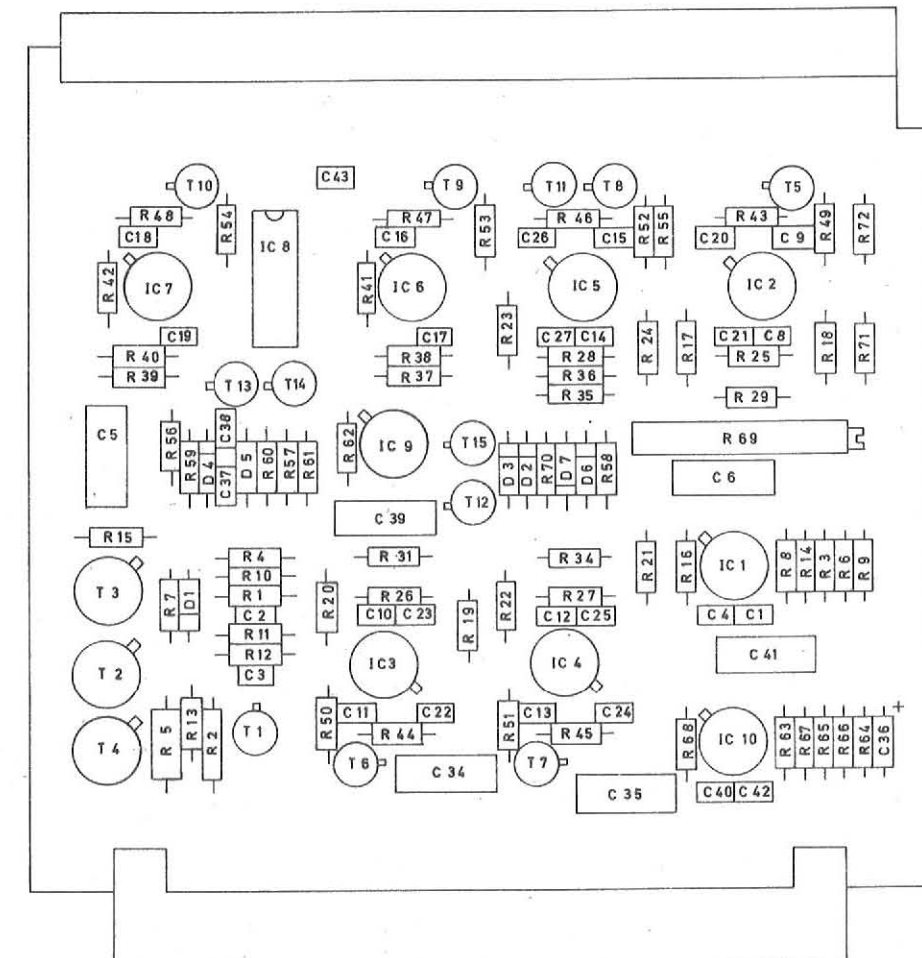


Figure 4-14A CARD WI
COMPONENT SURVEY

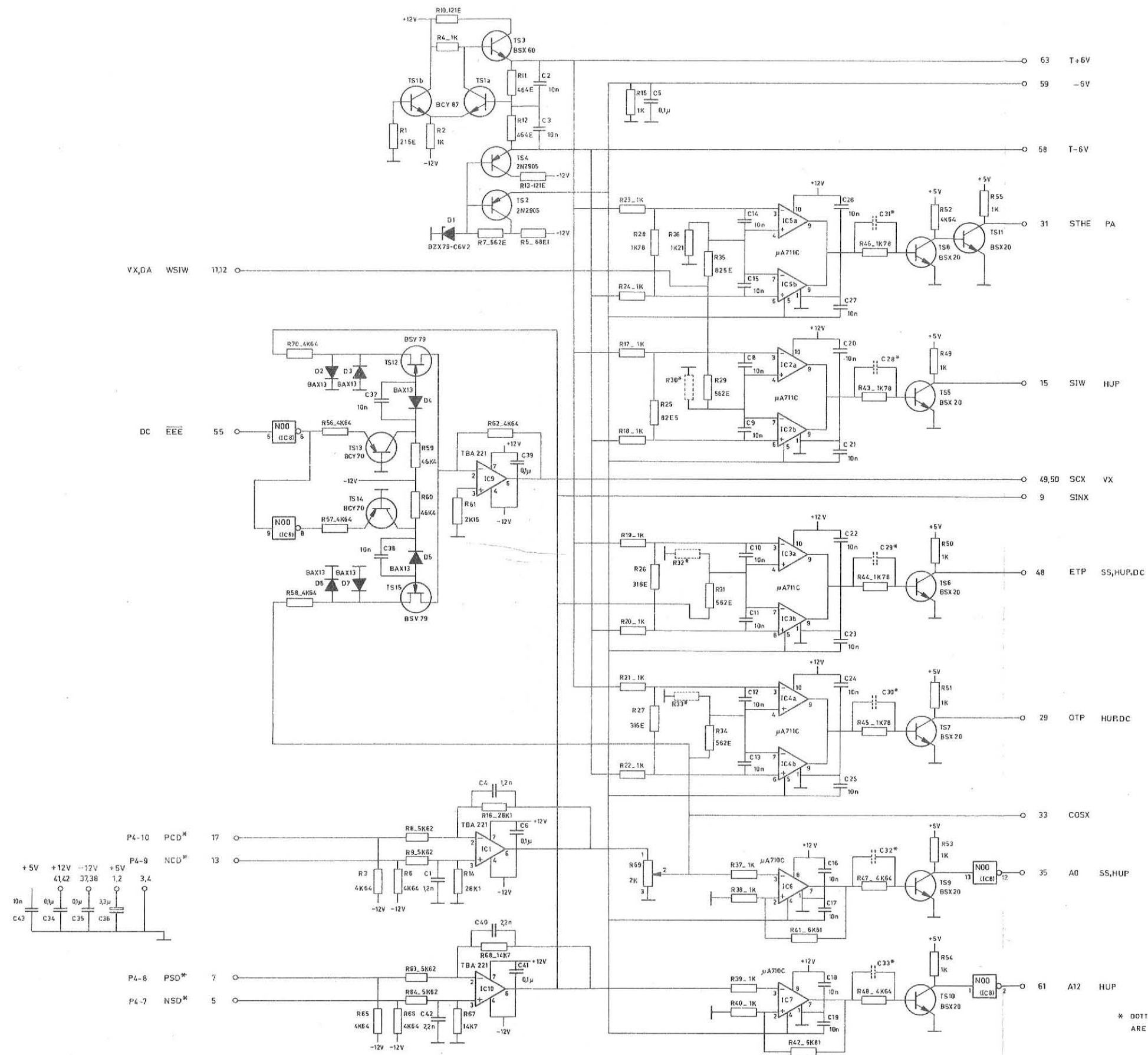


Figure 4-14 CARD WI 1M67

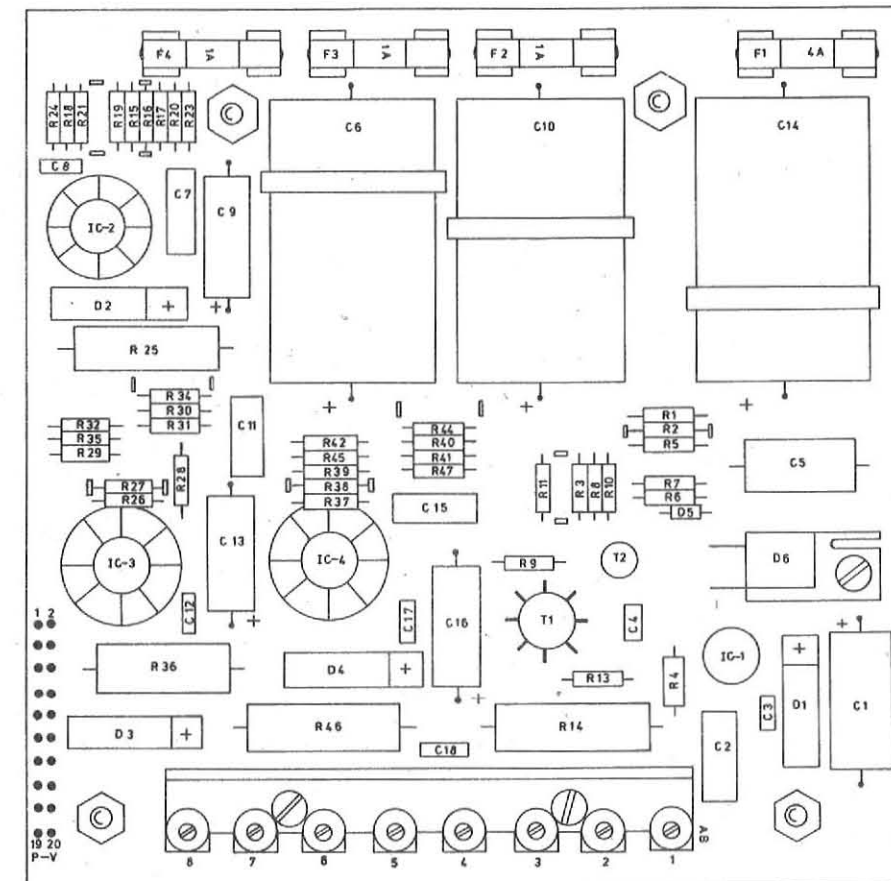


Figure 4-15A CARD POWER
COMPONENT SURVEY

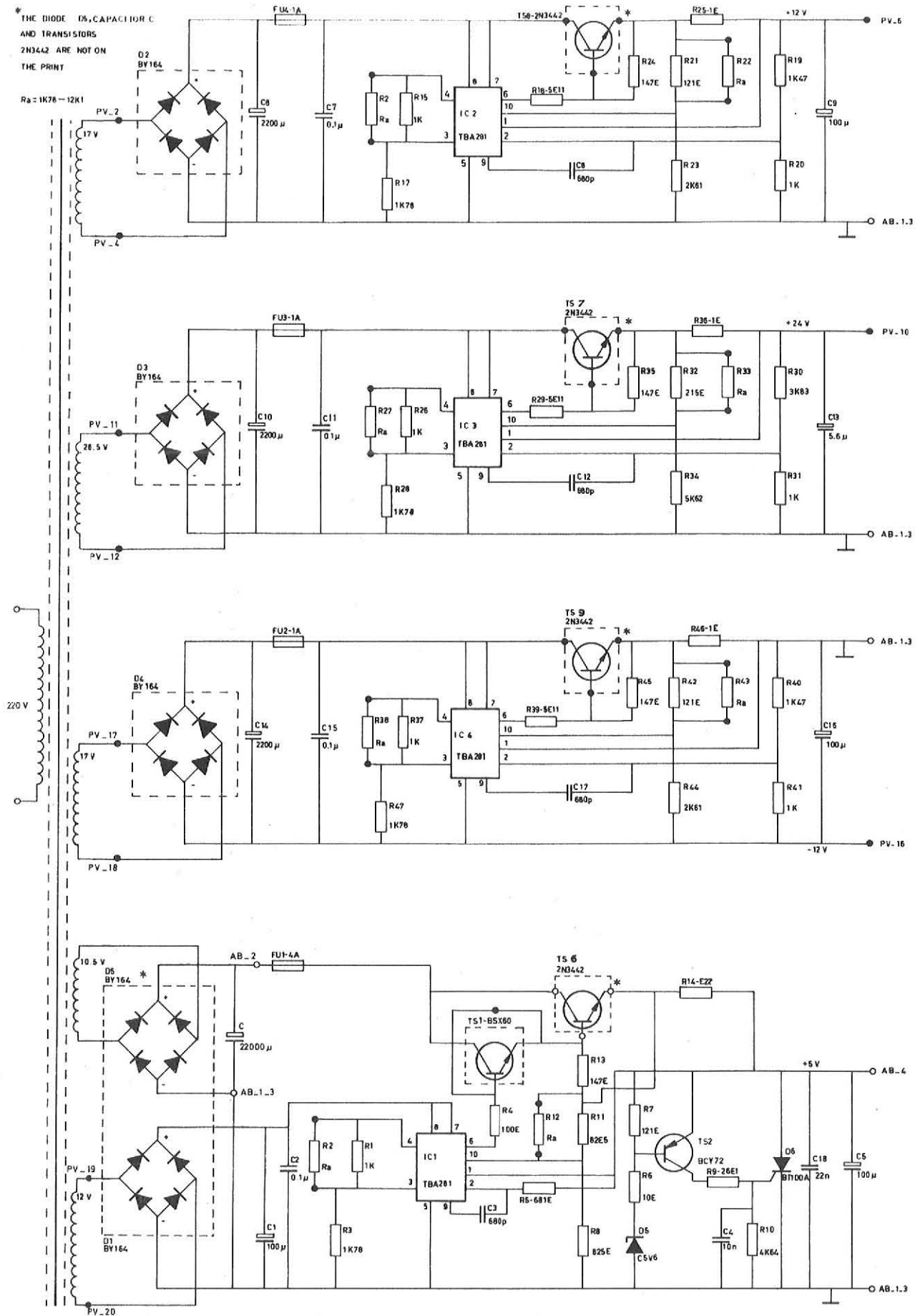


Figure 4-15 POWER CARD

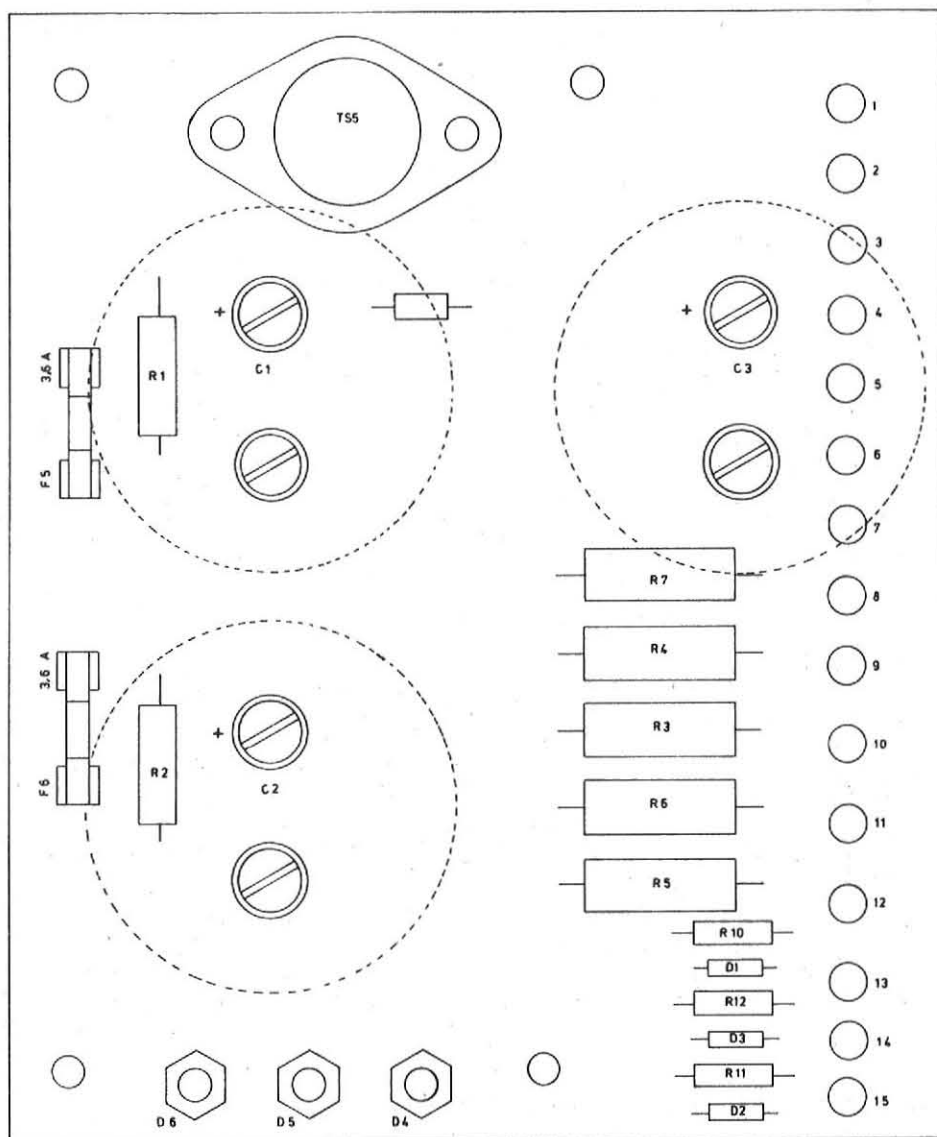


Figure 4-16A DRIVER PRINT
COMPONENT SURVEY

